

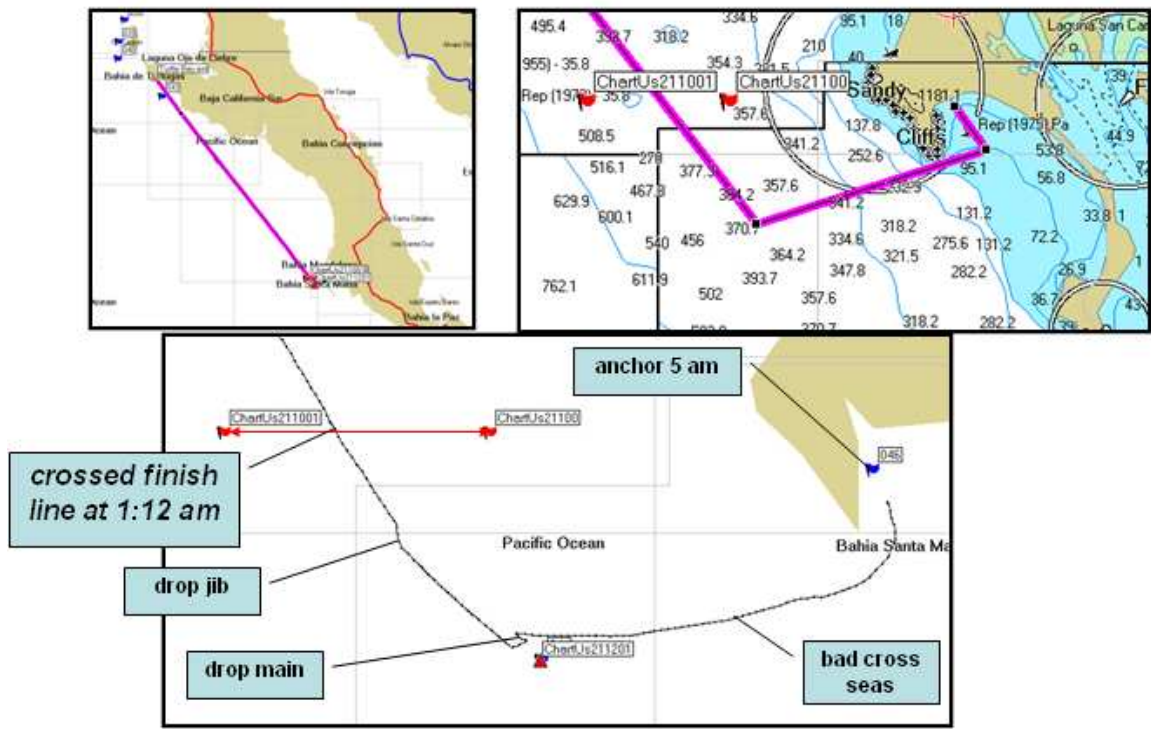
## ***Leg 2 of the Baja Ha Ha to Bahia Santa Maria***

Leg 2 was a 240 mile run which began at 8 am on November 1 from Turtle Bay. Although moderate 18-24 knt following winds were predicted they didn't quite get that high. Because of the light winds a rolling start (motoring) was used and "sailing" conditions signaling the real start of the race were not until 10 am. You could tell the race had started when chutes started appearing. Some were really eye cstching.

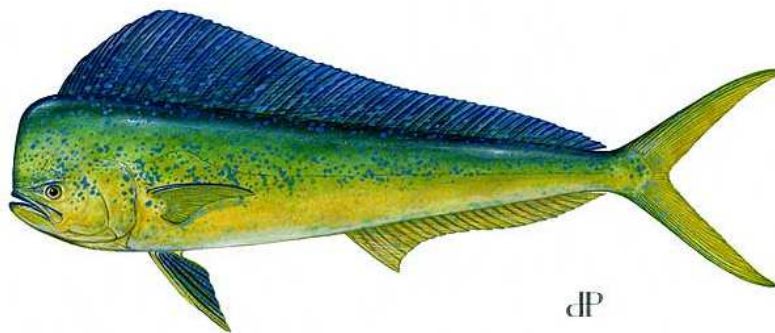


Duane was happy we had a good position and we began fishing but the Captain did not have much luck although he did manage to lose some nice lures. Annette finally had to pitch the flowers we gave her in San Diego.

The first nite we had terrible seas and no wind which caused a tear in the jib when it caught on the steaming light on front of mast. We went to motoring to save rig and sails. Big chaotic seas without wind are not good for sails or equipment and caused many breakdowns in the fleet. One boat was dismantled and had to return to Turtle bay and withdraw from the rally. Other boats had all sorts of problems such as steering failures but these were repaired and we continued on. The second day fishing conditions were reported as excellent throughout the fleet.

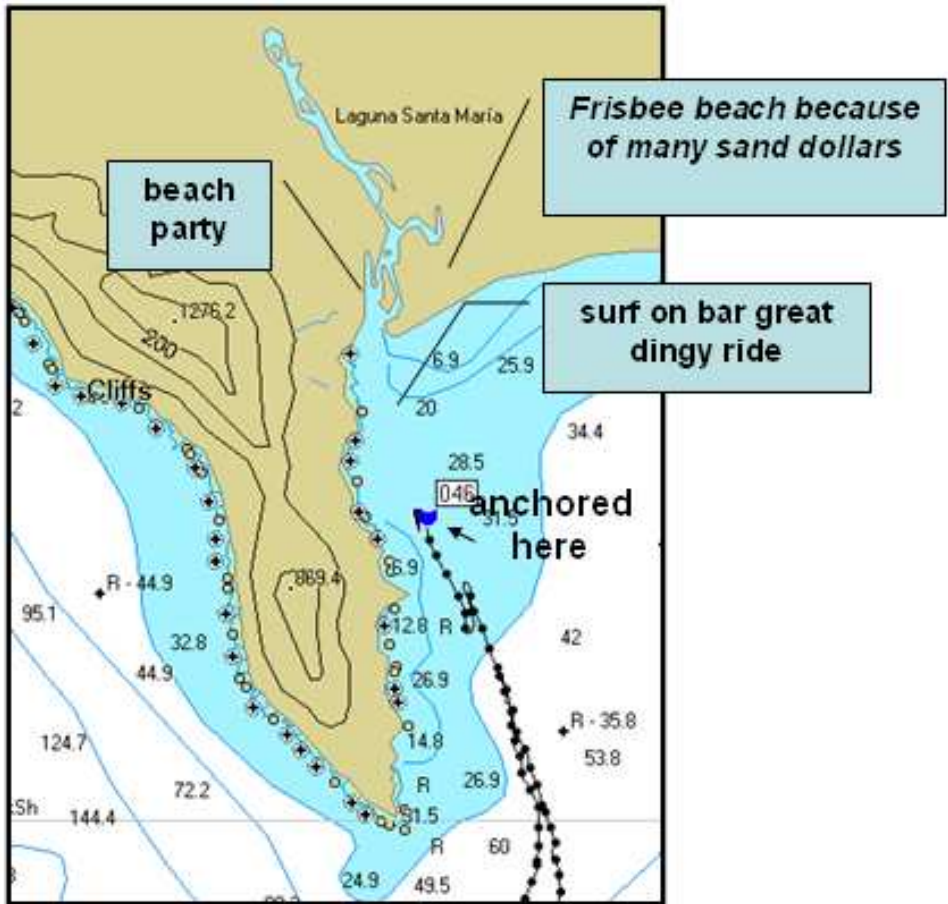


Annette caught a dorado but we were not able to land it. These fish are really beautiful and colorful. Some are green while others are blue. Annette's was blue like the one pictured here.



Sailing winds of 20 kts plus high seas returned on the 2<sup>nd</sup> day and this caused us to lose the steaming light altogether and the outhaul fitting on the main broke so we took down the whisker pole I had been using and put a reef in the main sail. The boat seemed to do much better without the pole but in the afternoon the reefing line parted and had to be repaired.

It was a very happy crew when we finally crossed the finish line on Sunday morning at 1:12 am. We recorded a total time of 2352 minutes with 840 minutes of motoring. We did not reach the Santa Maria anchorage until 4 am due to large cross seas and what appeared to be some tidal currents working against us. We dropped the hook and hit the sack for some much needed sleep.



After everyone had slept some we awoke and had a look around. We were in a very wild and beautiful bay and the morning colors were really cool. Annette was happy to find we had a stowaway which landed on deck in the night. It was a flying fish and they can really fly for quite a distance. After a big bowl of cereal everyone was ready to explore the bay.



At the head of this bay is a lagoon which flows into the bay and which can create some spectacular surf. Not wanting to take chances we elected to use a panga fisherman to take us into the lagoon to explore the local fishing camp. You would be surprised at how primitive these places are!



We found the local cantina and naturally purchased beers and a case to go since our supply was running low. The people are really nice and although we did not speak very good Spanish we felt we made friends and took their pictures.



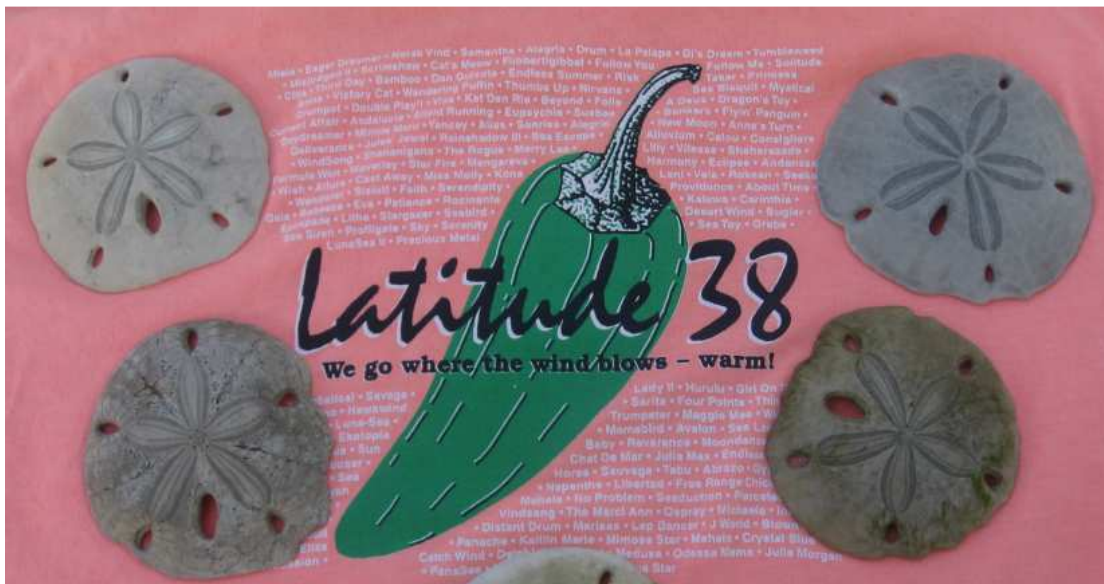
Nearby we found an interesting group of bungalows for sports fishermen who want to come to somewhere primitive but with great fishing. There was a great view of the Baja fleet in the background. Annette made friends with the women who ran them and took her picture with Rita (her dog).



Well we had enough exploring and returned to the boat by Panga with our booty (beer). Annette had promised her Burrito dinner so Duane and I were anxious to return to the boat. The top picture shows Frisbee beach, so called because of the large numbers of sand dollars found there.



Here is a picture of some Duane and I collected. They are pictured on top of a tee shirt with the names of all the boat in the fleet. If you look closely you will see WindSong among them.



Well that night as promised we had our burrito dinner ..thank you Annette!

