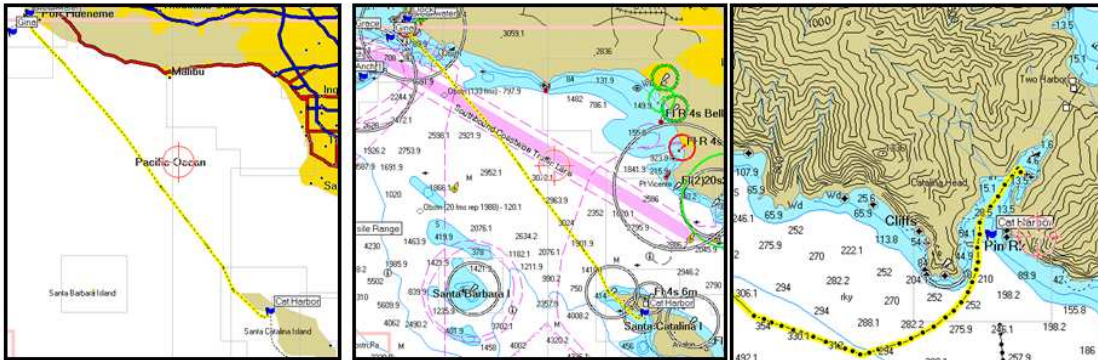


Trip to Catalina Island and San Diego

Annette and Ed leave Channel Islands harbor on October 16 at 8 a.m. sailing for Catalina Island's Cat harbor 55 miles to the Southeast.



This area of Catalina is called two harbors. The mainland side is called the isthmus and the south is Cat harbor. We like Cat harbor because it is more protected and quiet. However, it takes a 1/2 mile hike to reach the little town of 150 people. Hiking at night can be interesting since buffalo roam free on this island.



Here you can see Captain Ed overlooking Cat harbor and on right is picture of the Isthmus harbor.



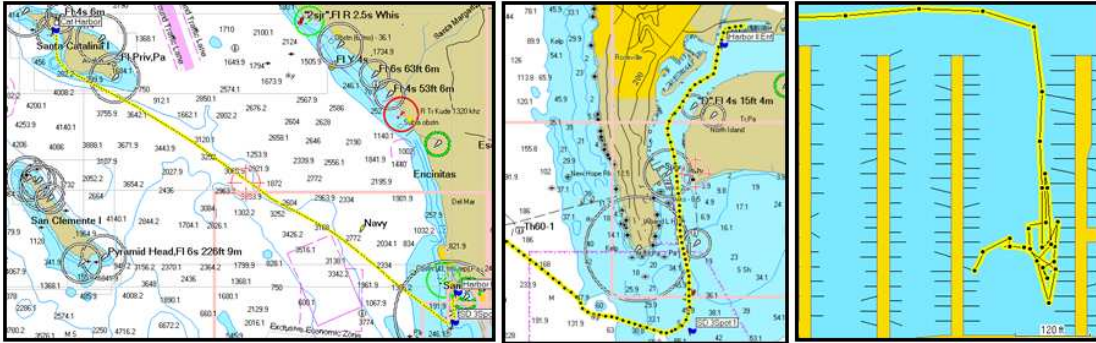
While drinking Buffalo milk at local isthmus pub met a nice couple from San Diego who had been at Cat harbor for some time. They told us about cocktails and snacks at a great place up high on a hill called the Banning House. They were right and here are pictures of our visit.



What a view of Cat harbor....can you see WindSong?



Early Sunday morning (5:30 a.m.) we sailed for San Diego from Catalina, a distance of about 78 miles. Weak tailwinds so we motor-sailed for 14 hours to reach our destination. Rented a slip behind the Sheraton on Harbor Island. Slip looks easy but look at the GPS



track above right. I clearly trouble making a smooth landing in the dark!



For our final week in the US we visited with old friends (Viswanathans), rented a car and did our final shopping as well as repairing a few items like broken fuel gage and whisker pole fitting. Extra fuel tanks increased range under power to 300 miles.